

CeRch: A Centre of Excellence in e-Research

CeRch works at the intersection between cross-disciplinary research and practice in information creation and management, knowledge production, and ICT methods, tools and technologies.

Our Research Objectives

Our research strategy is configured around several core topics, including: e-research methods for digital scholarship, e-infrastructure and knowledge management, the application of arts and humanities e-science, and all aspects of the digital life cycle.

CeRch takes a leading role in a number of national and international projects reflecting the research interests at the Centre. We also conduct several projects in partnership with other departments at King's and at centres of expertise in the UK and internationally.



Nationally Funded Services

Services based at CeRch include: the Arts and Humanities e-Science Support Centre (AHeSSC), arts-humanities.net and ICT Guides.



Advice and Support for e-Research

CeRch's consultancy service offers support and advice for all areas of our expertise. A charging policy is in development that will allow us to collaborate in data creation projects and to offer repository hosting and curation services. We also offer tailored training programmes to share our expertise and experience.



Our Teaching Programme

CeRch, in collaboration with the Centre for Computing in the Humanities, will offer an MA in Digital Asset Management from 2009.

KING'S
College
LONDON

University of London

Centre for e-Research

<http://www.kcl.ac.uk/iss/cerch>

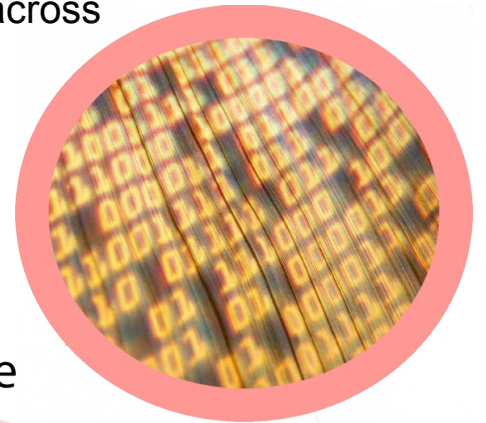
cerch@kcl.ac.uk

MA in Digital Asset Management

The Centre for e-Research, in collaboration with the Centre for Computing in the Humanities, will offer an MA in Digital Asset Management (MADAM) from 2009.

Why Consider Digital Asset Management

One of the first programmes of its kind in the world, MADAM provides participants with training to equip them to create, curate, and manage the digital assets of organizations and institutions across the public and private sectors. The programme is aimed at a broad audience, but is particularly relevant to those working as - or aspiring to work - in the cultural heritage sector, including libraries, archives, museums and galleries.



Managing the Digital Lifecycle

The focus of MADAM is the important considerations of curatorial and technical standards that arise throughout the digital resource life-cycle. Participants will be taught on a broad range of subjects to develop their understanding and competencies in the requirements, processes and implications involved in the creation, documentation, management, dissemination and long-term preservation of digital content. Topics covered by the course include national and international best practice, and the role and use of standards for metadata and technical work.



Studying at King's College London

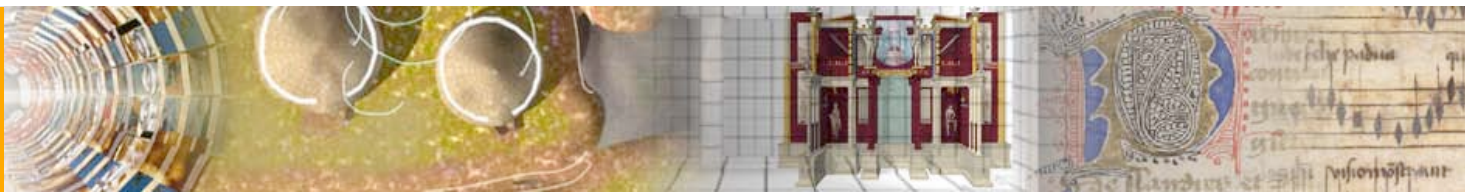
King's College London is one of the oldest and largest colleges of the University of London: a major multi-faculty university institution with over 19,000 students. It has a leading position in UK higher education and a world-wide reputation for research and teaching.

KING'S
College
LONDON

University of London

Centre for e-Research

<http://www.kcl.ac.uk/iss/cerch/>



arts-humanities.net

arts-humanities.net is a place to share and discuss ideas, promote your research and discover the digital arts and humanities.

The virtual community of arts and humanities researchers is developed by the Centre for e-Research in collaboration with several other institutions and communities - for instance the Network of Centres, a group of academic centres with expertise in data creation and curation.

As a member of the community you can:

- announce activities in your field to a wide audience;
- keep up to date with what others are doing;
- exchange ideas and experience with the community in our group forums and user blogs;
- build your profile to show your research interests and background and search others' profiles to find contacts and identify future collaborations;
- access and contribute to information on tools and methods for your research.

arts-humanities.net also offers access to an events calendar, a job portal and discussion fora and community spaces. We would be happy to host your community and offer features including blogs and open or private discussion groups.

Discussions and postings are automatically announced on other websites and integrated into social bookmarking and networking sites to make them available to a wide audience. Our RSS feeds make it easy to add our community content to your site.

For further information please contact Torsten Reimer (torsten.reimer@kcl.ac.uk).

KING'S
College
LONDON

University of London

Centre for e-Research
<http://www.kcl.ac.uk/iss/cerch>



Arts & Humanities
Research Council

JISC

ahessc research projects

The AHRC-EPSRC-JISC Arts and Humanities e-Science Initiative has awarded seven major research grants in Arts and Humanities e-Science to projects covering a wide range of subjects in both the arts and the humanities.

e-Dance

This project explores the unique opportunities of new technologies, including the Access Grid, for developing new approaches to choreographic composition and process; and for capturing and documenting the development of the creative process within practice-led research.



Principal Investigator: Helen Bailey, University of Bedfordshire

Purcell Plus: Exploring an e-Science Methodology for Musicologists

Purcell Plus investigates methodological issues surrounding the use of computer techniques in musicology. Purcell Plus is building a computer-assisted research framework around three domains of information: musical scores, recordings and textual commentaries on the music.

Principal Investigator: Tim Crawford, Goldsmiths College, University of London

E-Curator: 3D Colour Scans for Remote Object Identification and Assessment

This project explores the use of 3D colour scanning and e-science technologies to capture and share very large 3D colour scans and detailed datasets about museum artefacts in a secure computing environment.

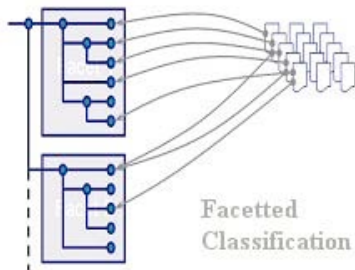
Principal Investigator: Sally MacDonald, University College London

<http://www.ahessc.ac.uk/>
support@ahessc.ac.uk



ahessc research projects

Archaeotools: Data Mining, Faceted Classification and e-Archaeology



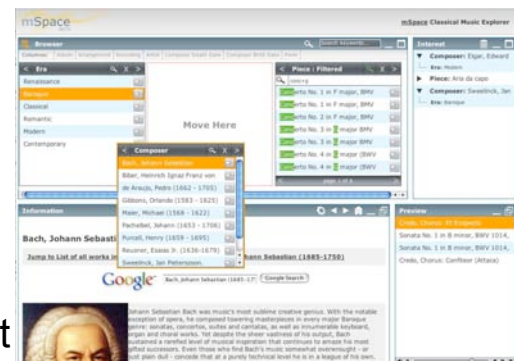
This project combines faceted classification techniques with an intuitive map-based interface and natural language processing to create tools for archaeologists to discover, share and analyse datasets and legacy publications which have hitherto been very difficult to integrate into existing digital frameworks.

Principal Investigator: Julian Richards, University of York

musicSpace: Using and Evaluating e-Science Design Methods and Technologies to Improve Access to Heterogeneous Music Resources for Musicology

musicSpace uses and evaluates e-science design methods and technologies to integrate and improve access to heterogeneous music resources.

musicSpace's vision is to provide the best support possible for researchers to be able to explore relevant information sources and build new knowledge.



Principal Investigator: monica schraefel, University of Southampton

Medieval Warfare on the Grid: The Case of Manzikert

This project seeks to address the problems associated with early military logistics through a distributed GRID analysis and using an Agent-based model. Results will benefit academics with an interest in comparative military history, the cultural role of military organization and the relationship of historical and modelled data.

Principal Investigator: Vincent Gaffney, University of Birmingham

ASPiS: Architecture for a Shibboleth-Protected iRODS System

Aims + Objectives

The project addresses two aspects of access management for virtualized resources in iRODS data grids:

- * Access control allowing fine-grained access rights to be defined for roles and not just user identities;
- * Capture and recording of provenance metadata that tracks access to resources.

Methodology

The project involves:

- Creating a detailed requirements definition to ensure that the implementation is grounded in authentic user needs;
- Taking a modular approach to development to enable different implementations of authorization or provenance services to be used by different iRODS systems;
- Taking an iterative approach to evaluation: in collaboration with potential users, and in particular with the NGS.

ASPiS will demonstrate the utility of iRODS for managing research data, will simplify access management for iRODS data grids, and will enable data grids to be more easily integrated within the UK Access Management Federation.

Outputs + Outcomes

- Use cases and requirements;
- Software modules for iRODS that support capture of Shibboleth attributes, use of Shibboleth attributes for determining access to iRODS data resources, and capture of provenance metadata;
- A prototype Shibboleth-enabled iRODS data grid available as a test bed;
- A case study.

EPSRC Digital Repositories e-Science Network

DReSNet was established to realize the potential for synergy between e-science and digital repositories and the benefits of increasing interaction and cooperation between researchers and practitioners in these fields.

The Network's Priorities

The network addresses a group of related issues where e-science and digital repositories meet:

- the incorporation of e-science methodologies and tools within digital repositories;
- the integration of repositories within wider e-infrastructures;
- the enhancement of digital repositories to manage complex scientific workflows;
- the federation of repositories using advanced techniques such as grid and semantic technologies.

DReSNet addresses each of these issues within the broader context of data creation and curation in e-science.

Be Part of DReSNet

As repository technologies are trans-disciplinary, DReSNet operates across disciplines. The Network is open to academic and non-academic institutions and encourages industrial participants, including commercial companies, cultural heritage organizations, media and public government bodies.

Forthcoming Network Events

Adding Value to Data – Digital Repositories in the e-Science World

Special Session at the 4th IEEE International Conference on e-Science, 7-12 December 2008, Indianapolis, USA

Data Ecosystems: Repositories in Digital Ecosystems

IEEE DEST 2009, 1-3 June 2009, Istanbul, Turkey

More information: <http://www.dresnet.net/node/1>



ICT Guides

Information and communications
technology for arts and humanities
researchers



Methods

The ICT Guides contain listings of **the ICT-based methods that arts and humanities researchers** have used to capture, structure and enhance, analyse and present digital research outputs



Projects

The ICT Guides provide **information about research projects undertaken in the arts and humanities**, in the hope that these examples will both inform and inspire those researchers who wish to engage with the potential of ICT.



Training

The ICT Guides provide **links to training resources** for researchers in the arts and humanities, focusing on online courses, communities and guides holding valuable information.

ICT Guides also contain valuable information about relevant **Research Centres** employing ICT, about **useful computing tools** and **case studies** on the use of ICT.

Investigating the Significant Properties of Electronic Content Over Time



The InSPECT Project is funded by JISC to develop a generalized methodology that will allow resource curators to identify, measure, and declare the significant properties of a specified group of digital object types that must be preserved.

What are Significant Properties?

Significant properties are the aspects of a digital object that must be maintained to ensure its continued access, use, and meaning over time. The significant properties of digital objects fall into five categories: content, context (metadata), rendering (layout, colour), behaviour (interaction, functionality), and structure (pagination, sections).

The project is committed to performing the following activities:

A magnifying glass with a black handle and a silver rim, positioned over the first activity. The lens is centered on the text.

1) Articulate the concept of significant properties, as it applies to the intended function of digital objects.

A magnifying glass with a black handle and a silver rim, positioned over the second activity. The lens is centered on the text.

2) Determine the properties that must be considered significant for the preservation of four digital object types (raster images, emails, presentation mark-up languages and audio).

A magnifying glass with a black handle and a silver rim, positioned over the third activity. The lens is centered on the text.

3) Produce a generalized methodology for the identification and comparison of the significant properties for different file formats.

A magnifying glass with a black handle and a silver rim, positioned over the fourth activity. The lens is centered on the text.

4) Develop a data dictionary that will enable format registries and other institutions to record the significant properties contained in digital objects.

MetaTools

MetaTools is a JISC-funded project that is investigating tools to automatically generate resource discovery metadata. It seeks to ease the metadata 'bottleneck' experienced by repositories struggling to catalogue an ever-growing number of digital resources.

Most currently-available tools for generating resource discovery metadata are not easily integrated into efficient portal or repository workflows.

Tools generally support a narrow range of source formats, only function effectively for documents of a predictable layout or genre or within a narrow subject domain, and generate a restricted element set.

The Historical Journal, 40(4) (1997), pp. 1033-1054. Printed in the United Kingdom
© 1997 Cambridge University Press

TARIFF REFORM: AN IMPERIAL STRATEGY, 1903-1913*

ANDREWS S. THOMPSON
University of Leeds

ABSTRACT. Historians of the Edwardian tariff reform movement have disagreed about its aims. This article examines the motivations of the leadership of the Tariff Reform League, which was by far the most influential organisation in the tariff lobby. It argues that the League's leaders were more entrepreneurial than often assumed, and that it was the professional tariff which they were most determined to promote and defend. Indeed, attempts by the Bischoffheim wing of the Unionist party to resist tariff reform away from its imperial origins were strongly resisted by the League, and the forces of protection within the organisation were also carefully controlled. When the Tariff Reform League finally gave up on the issue of imperial preference in January 1913, it was not because it had

```
<metadata>
<title>Tariff reform: an imperial strategy, 1903-1913</title>
<creator>Thompson, Andrew S.</creator>
<date>1997</date>
<bibliographicCitation>The Historical Journal 40(4), 1033-1054</bibliographicCitation>
<rights>© 1997 Cambridge University Press</rights>
<abstract>Historians of the Edwardian tariff reform movement have disagreed about its aims. This article examines the motivations of ... </abstract>
</metadata>
```

Problems with Existing Metadata Tools

- A single metadata record is likely to require the merging of output from several tools plus some subsequent manual enhancement.
- In the absence of a plug-in or Web services architecture, each tool generally involves a separate online interface.
- There is no way for the most appropriate tool to be invoked and executed automatically.
- There is no registry or trusted body of documentation that rates the quality of metadata generation tools or identifies the most effective tool(s) for any given task.

The MetaTools project is :

- Producing a methodology and metrics to objectively evaluate metadata creation tools
- Conducting a controlled testing programme that compares the quality of metadata produced by existing metadata generation tools. e.g. DC-dot, Data Fountains, Jhove, KEA, and Samgl;
- Developing, testing and disseminating prototype web services that integrate the most effective metadata generation tools and functionality.

KING'S
College
LONDON

University of London

Centre for e-Research

<http://www.kcl.ac.uk/iss/cerch/>